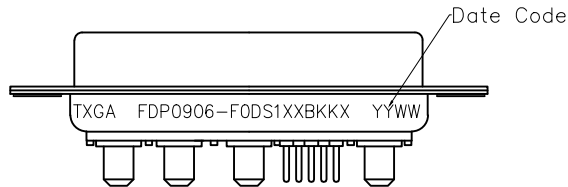
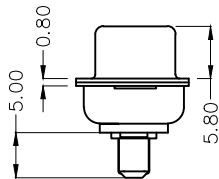
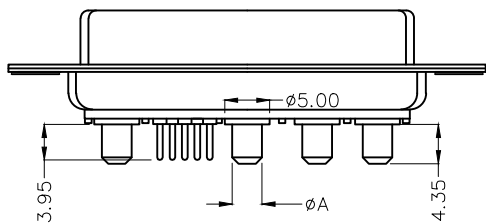
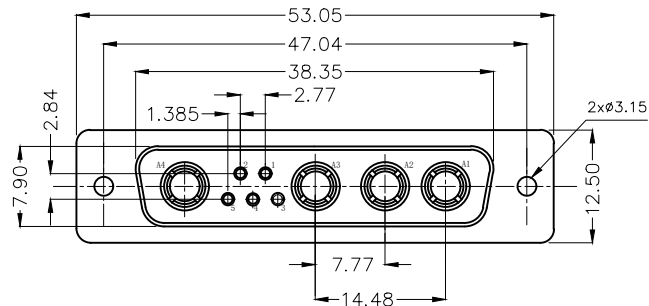


REV	LOCATIONS	DESCRIPTION	DATE	REVISER	APPD

**SPECIFICATIONS**

Electrical Characteristic  
 Current Rating: Signal contacts: 5A  
 Power contacts: 10 to 40A  
 Voltage Rating: 500V  
 Contact Resistance: 30mΩ Max.  
 Insulation Resistance: 3000 MΩ Min.  
 Dielectric Withstanding Voltage: 1000V AC r.m.s Min  
 Temperature Range—Operating: -55°C ~ +105°C  
 Material and plating  
 Shell: Steel, Nickel Plated. Back Shell: Steel, Tin Plated  
 Insulator: PBT (UL 94V-0)  
 Signal contacts: Copper Alloy/ Gold Plated  
 Power Contacts: Copper Alloy/ Gold Plated

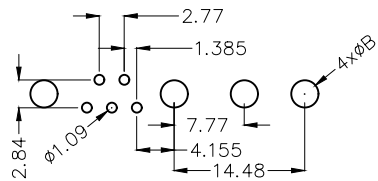


Type	Part NO.	A	B	Current Rating(A)
A	FDP0906-F0DS1XXBKKA	φ1.80	φ2.00	10A
B	FDP0906-F0DS1XXBKKB	φ2.80	φ3.00	20A
C	FDP0906-F0DS1XXBKKC	φ3.30	φ3.50	30A
D	FDP0906-F0DS1XXBKKD	φ3.80	φ4.00	40A

**Ordering Information**

FDP 09 06 — F0 D S 1 XX BK K X  
 1 2 3 4 5 6 7 8 9 10 11

1   D-sub Connector Category FDP—Power Type	2   Circuits 09-9W4	3   Distinction No. 06	4   Type F0—Female	5   Assembly Layout D—DIP	6   Entry Angle S—180° Vertical
7   Plating 1—Gold Plated	8   Thickness of Plating 01-1μ" 03-3μ" 15-15μ" Custom Plate Available	9   Color—Resin BK—Black	10   Packaging K—Tray	11   Pin Type A—Type A B—Type B C—Type C D—Type D	



Recommended P.C.Board Layout

THIRD ANGLE PROJECTION	GENERAL TOLERANCES (UNLESS SPECIFIED)		APPROVE BY LEO	DATE 25/JAN/24	PART NO. FDP0906-F0DS1XXBKXX	ITEM NO. FDP0906-F	 Building Technology Cornerstone
	X. ±0.30	X.* ±5°	CHECKED BY GISELLE	DATE 25/JAN/24	TITLE Hight current D-SUB connector 9W4 180° Vertical Female		
DESIGN UNITS METRIC	X.X ±0.20	X.X* ±2°	DRAWN BY NICK	DATE 25/JAN/24	THIS DRAWING CONTAINS INFORMATION THAT IS PROPRIETARY TO TXGA INDUSTRIAL ELECTRONICS(S.Z)CO.,LTD AND SHOULD NOT BE USED WITHOUT WRITTEN PERMISSION		
SCALE 5:1	SIZE A4	X.XX ±0.15	X.XX* ±1°	X.XXX ±0.10	X.XXX* ±0.5°		